



ARLINGTON ISD

CENTER FOR VISUAL AND PERFORMING ARTS

2022 James D. MacConnell Award

01



EXECUTIVE SUMMARY

*ARLINGTON ISD CENTER FOR VISUAL AND
PERFORMING ARTS*

Arlington ISD Center for Visual and Performing Arts

Executive Summary

A Bridge for their Future

The Center for Visual and Performing Arts (CVPA) is an investment by the community and school district to create a world-class facility for arts education that gives students a bridge to their future. The facility gives students a distinct advantage upon graduation when they are launching a professional career.

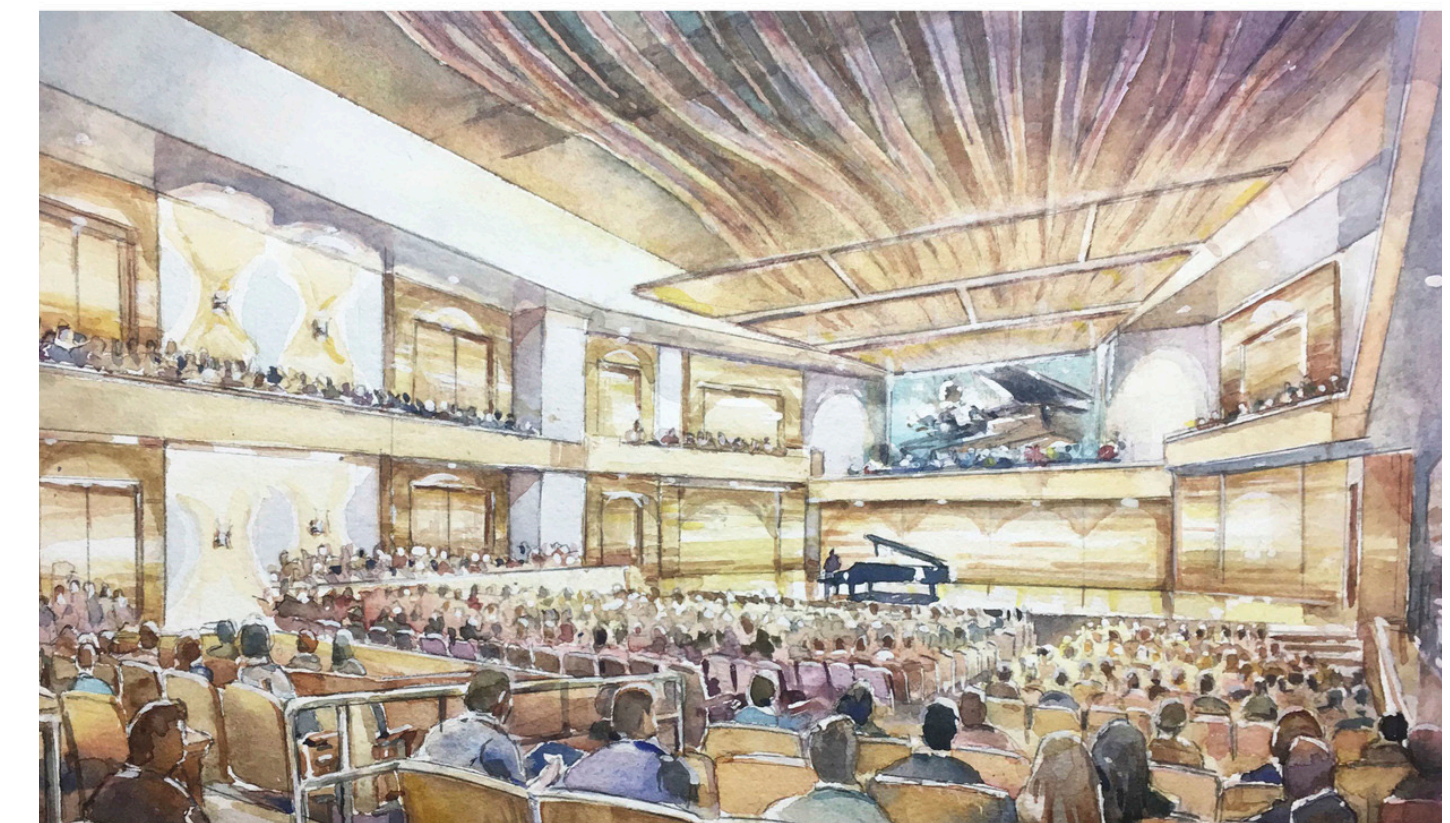
Through an inclusive design process, the design team guided the Arlington Independent School District in defining its vision and needs while rigorously balancing scope priorities discussed by the community against the budget challenges to deliver beyond status quo value. The result is a comprehensive Fine Arts Center that facilitates all students fine arts opportunities, hosting dedicated venues for music and theater that are right-sized for age-appropriate experiences that will propel high school students to the top of their class when competing for coveted spots at national higher education institutions.

OVERALL GOALS AND OUTCOMES

The goal was a world-class visual and performing arts center to serve Arlington Independent School District students from pre-kindergarten to 12th grade. The facility needed to accommodate not only a stand-alone performing arts venue and gallery for use by students and professionals, but also functioning classroom spaces for advanced art, a dance studio, music courses and other learning spaces and ultimately, a comprehensive fine arts facility.

The outcome has been a Center for Visual and Performing Arts that differs from other standalone performance venues in that it features fully operational classroom spaces for advanced art, dance and music courses. The CVPA opened fall 2020 during the challenges of a pandemic and the district expects a steady stream of arts students cycling through the building every day. Music, art and dance courses are open to all Arlington ISD students and count as credits toward their graduation requirements. The CVPA will host dedicated venues, age-appropriate experiences that will propel high school students to the top of their class and will continue to bring together the community, through the arts.

In addition, the project's location within the city of Arlington's prominent Entertainment District required the design of a pedestrian-friendly site. To provide a front door to the Center for Visual and Performing Arts and the Athletics Center, a pedestrian-focused "main street" was created, with a tree-lined plaza and park-like space for the arts lawn, where Arlington residents and visitors will be able to stroll and admire student sculptures. The lawn also has room for a future amphitheater.





CONCERT HALL

SECTION
A
B

Arlington ISD Center for Visual and Performing Arts

Scope of Work and Budget

GSF:	93,000 sf
Budget:	\$42,900,000
Services:	Architecture + Interior Design
Features/Uses:	1,250-seat concert hall 425-seat theater Art gallery Dance studio Community events Banquets Ticketed events Sculpture garden Meetings/training Visual arts studio Classrooms Instrument repair studio



02

SCHOOL + COMMUNITY ENGAGEMENT

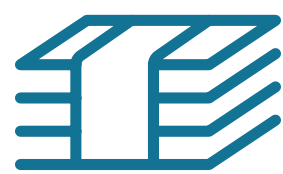
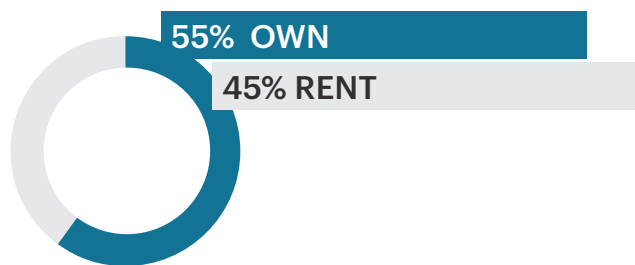
ARLINGTON ISD CENTER FOR VISUAL AND
PERFORMING ARTS

Arlington ISD Center for Visual and Performing Arts

School and Community Engagement

DESCRIBE THE COMMUNITY

Arlington ISD is a public school district in North Texas serving more than 63,000 students.



median
household
income \$60,571

#11 most diverse
cities
of **228** in America



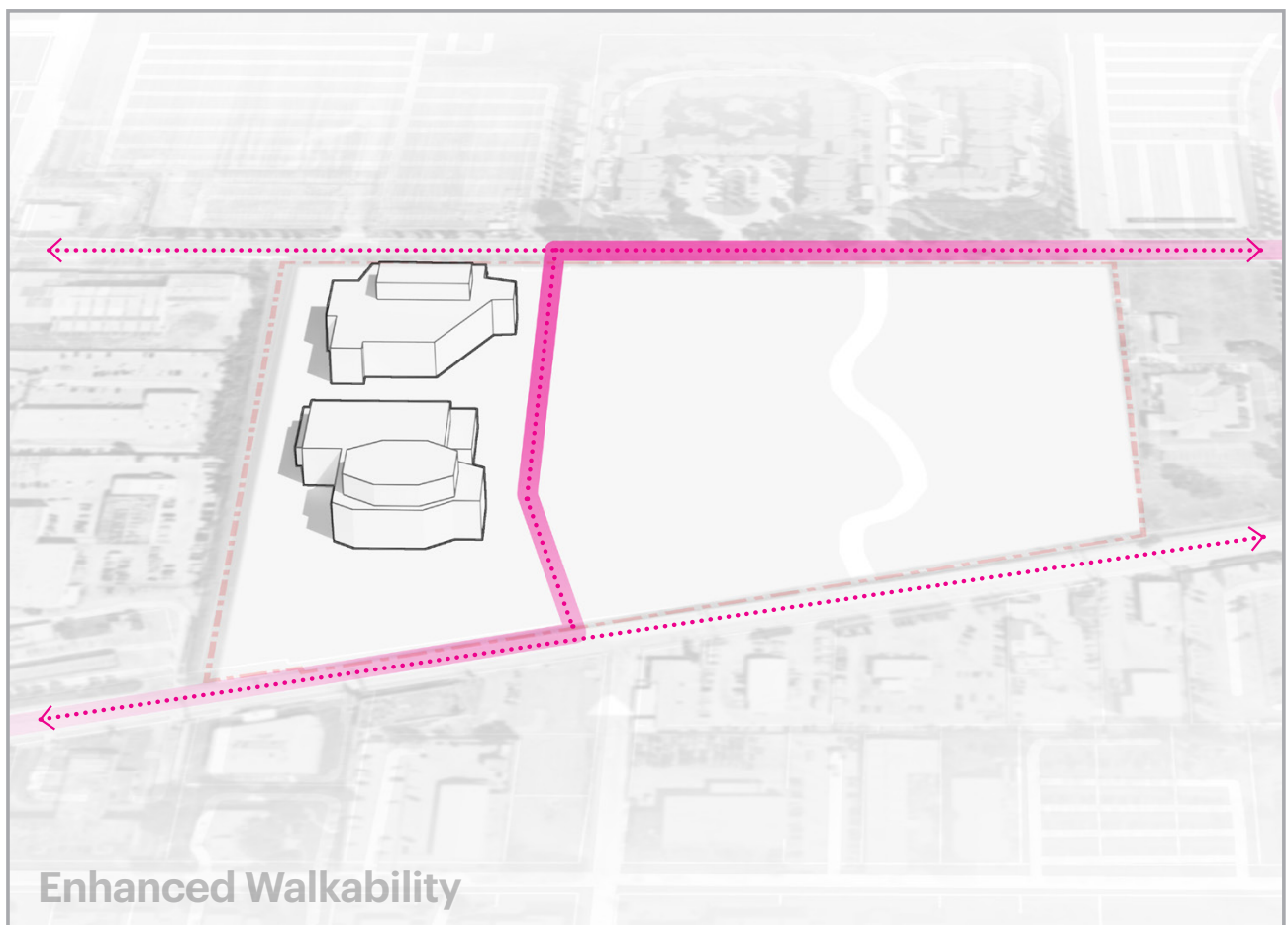
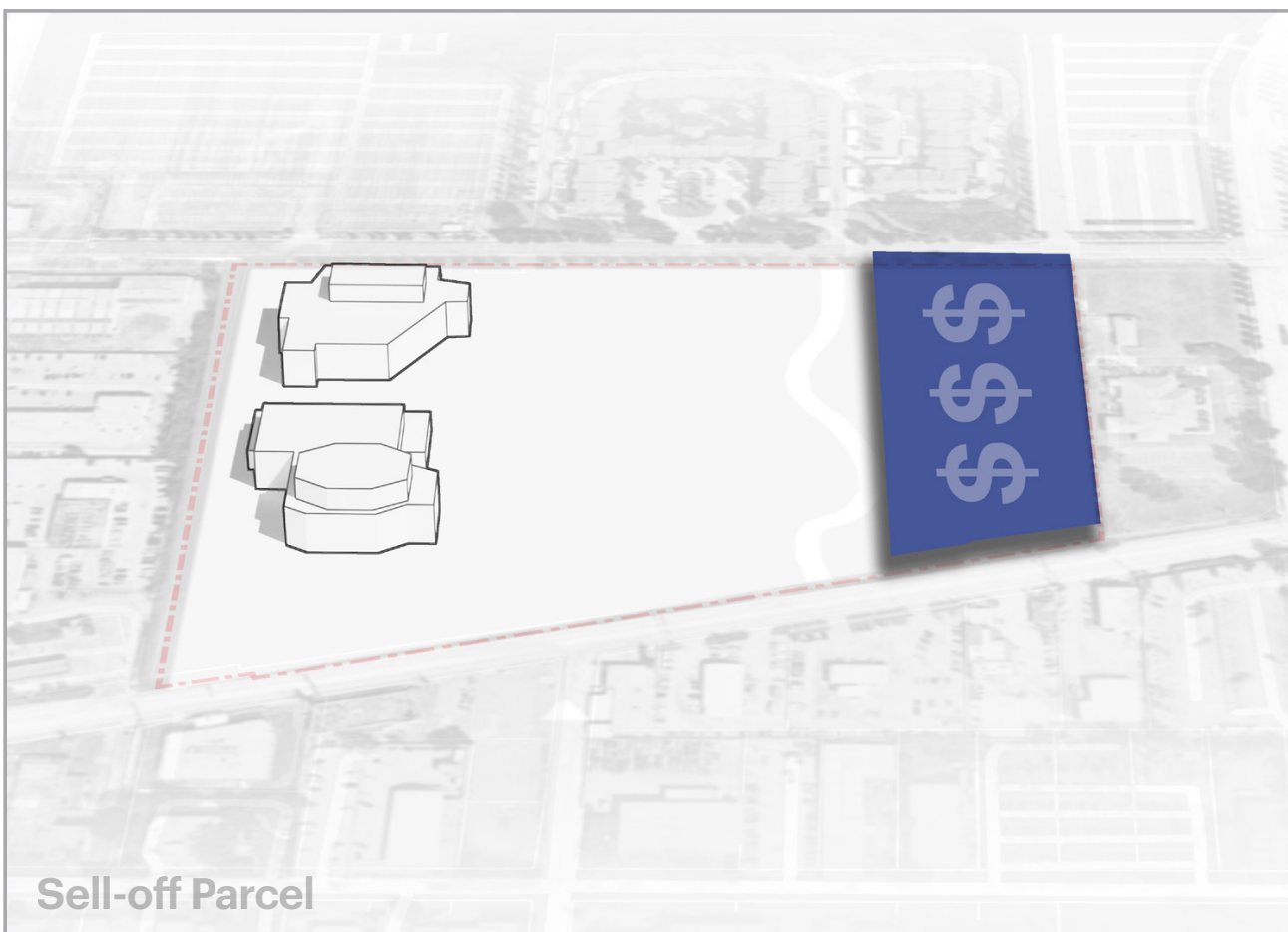
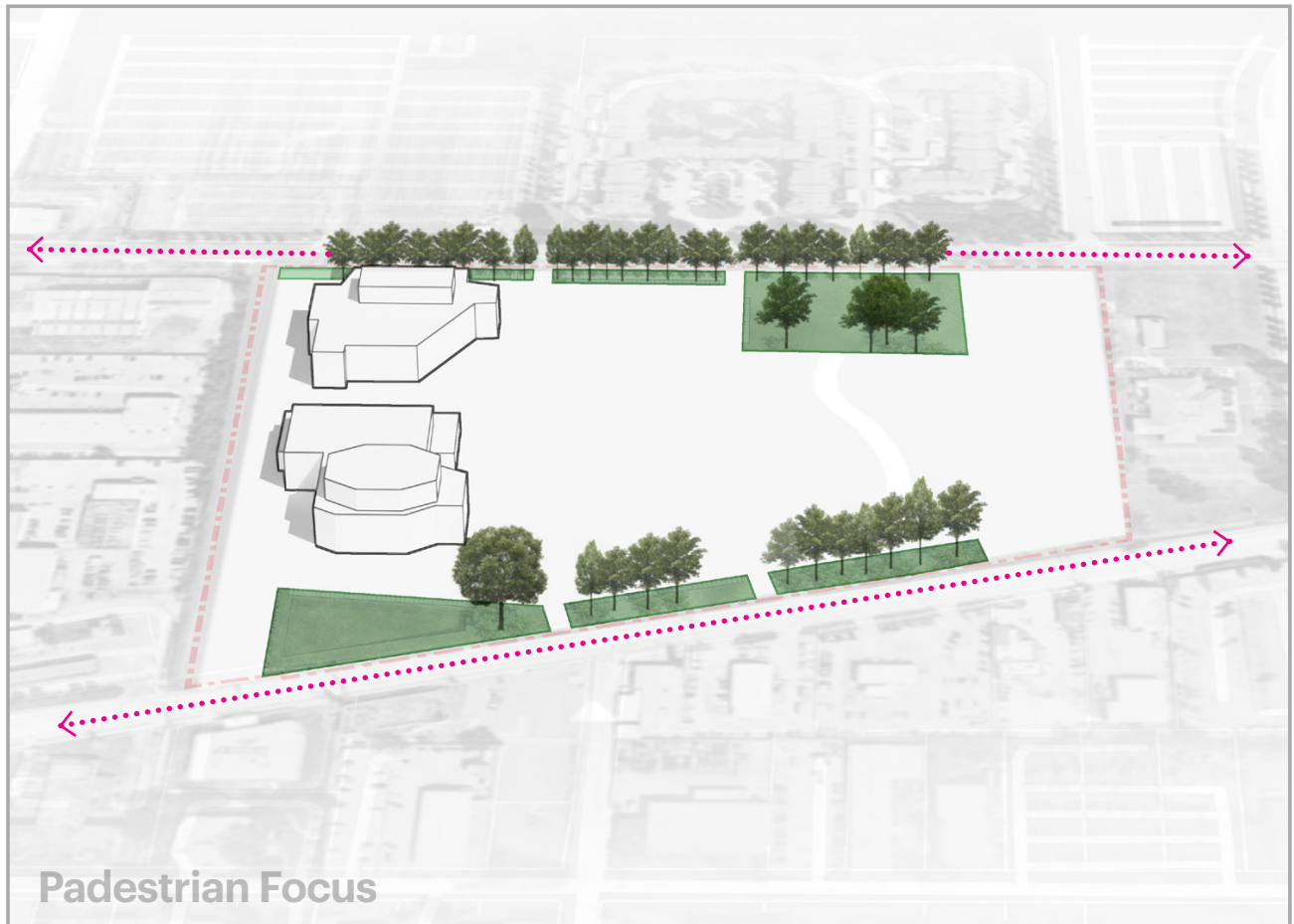
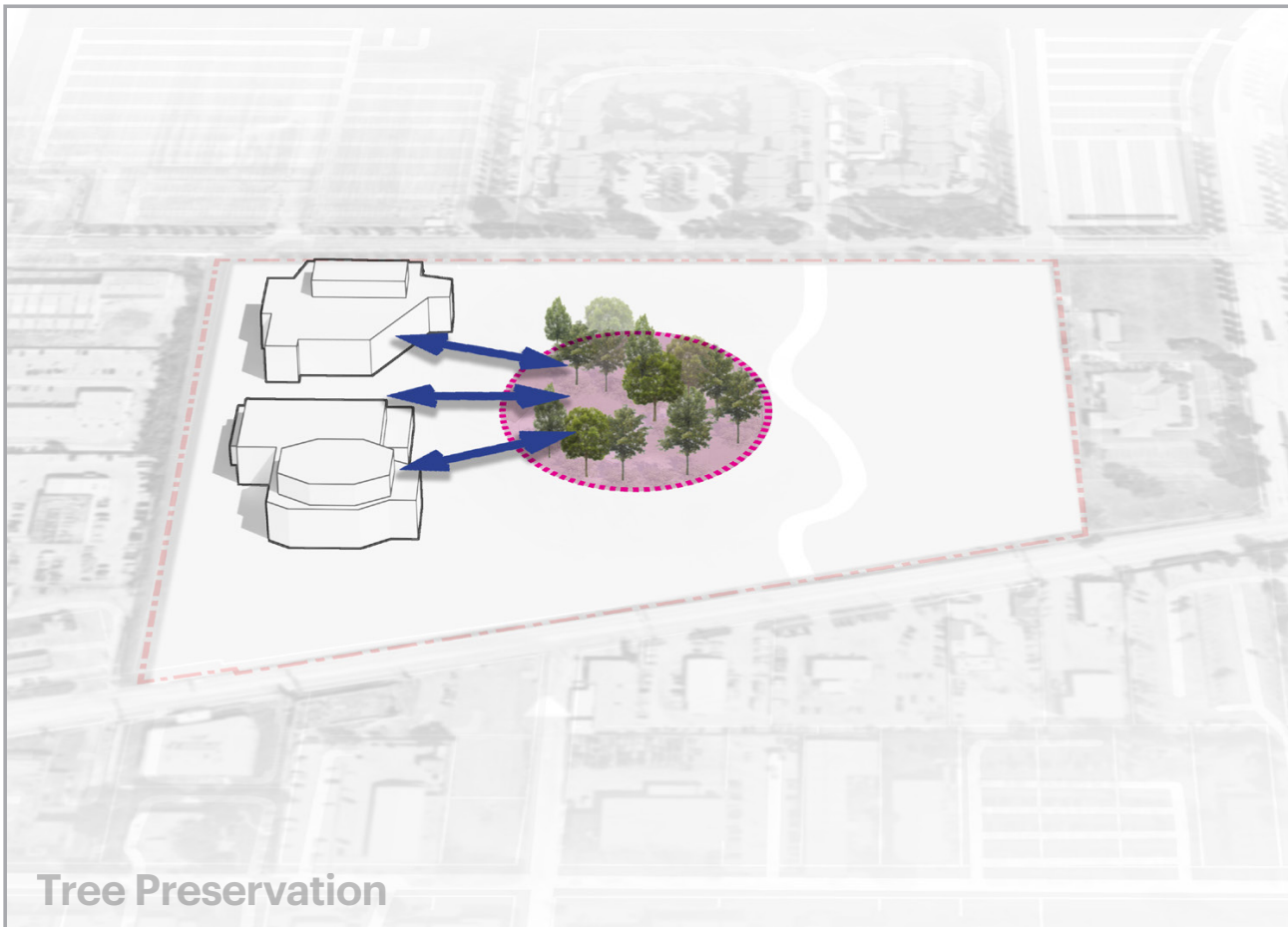
white 39%
hispanic - 30%
african american 22%
asian 6%
two or more races 2%

IDENTIFY STAKEHOLDERS

School district representatives across programs and age groups, teachers, students, parents, community members

NAME CHALLENGES

- Elevate the experience of students as they develop into bona fide artists.
- Minimize development impact while preserving the natural beauty of the site.
- Create beloved venues for students and the community alike.
- Create safe, inclusive and inspirational spaces for learning and the arts.



Arlington ISD Center for Visual and Performing Arts

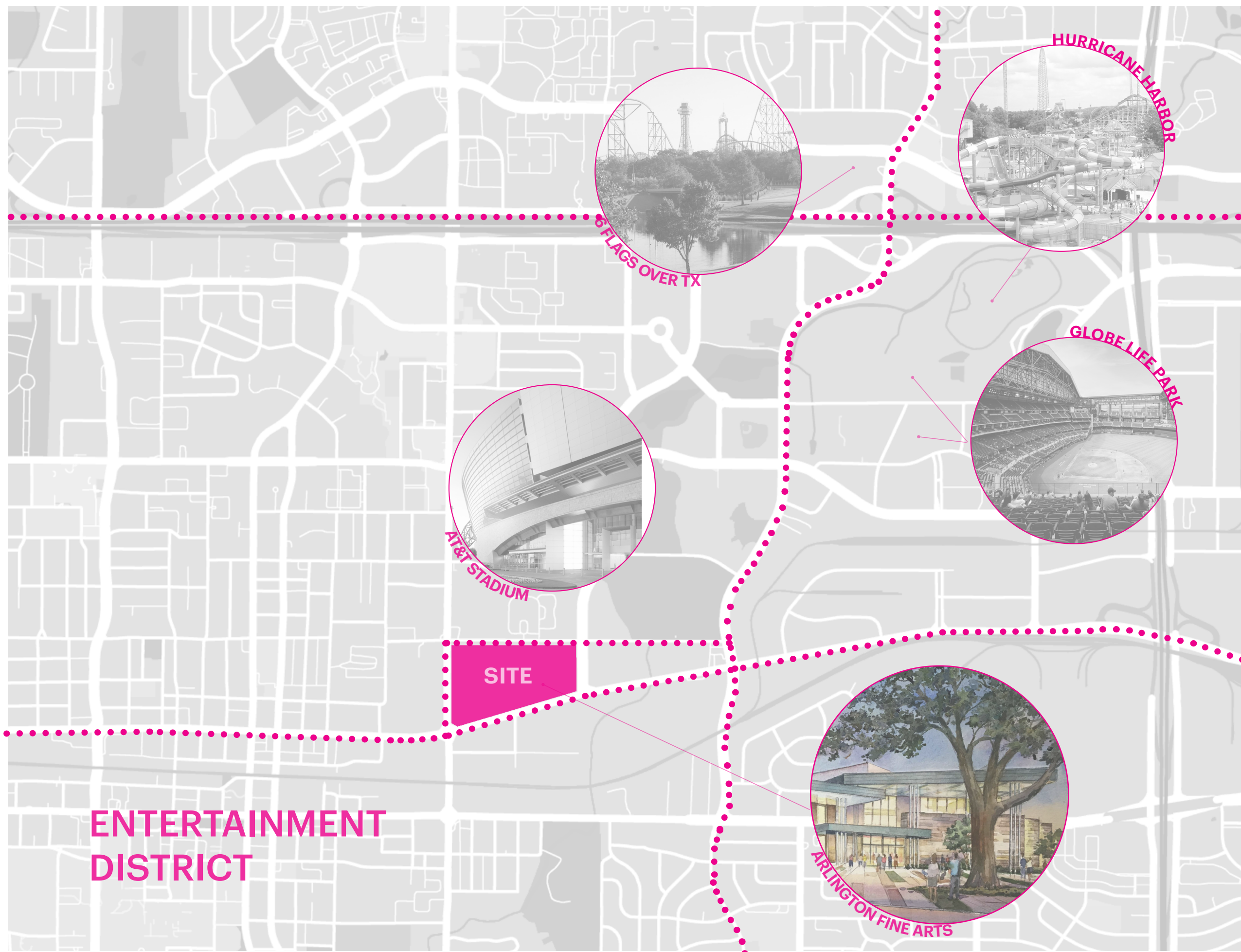
School and Community Engagement

AVAILABLE ASSETS + COMMUNITY CONNECTION

The Arlington Community and district had overwhelming community support to build a world-class venue for visual and performing arts. By developing two sites simultaneously, one for the Visual and Performing Arts and the second for a new Athletic Center, the district could benefit from shared development costs while being embedded within the vibrant Arlington Entertainment District.

VALUE OF PROCESS AND PROJECT TO COMMUNITY AT LARGE

The process consisted of a series of alignment and design charrettes conducted at the project's inception that allowed the district to identify project performance goals and priorities. It was through this robust stakeholder engagement process that the district capitalized on the idea of creating a community venue, one that stretched its arms out to the Entertainment District and placed the arts in Arlington on the same stage as the world-class sporting venues. The CVPA hosts a variety of performances and events, including indoor and outdoor public and private ticketed events, wide range of performances and events for *all ages*.



03

EDUCATIONAL ENVIRONMENT

ARLINGTON ISD CENTER FOR VISUAL AND PERFORMING
ARTS

Arlington ISD Center for Visual and Performing Arts

Learning Environment

EDUCATIONAL VISION AND GOALS OF THE SCHOOL

The mission of the Arlington independent school district is to empower and engage all students to be contributing, responsible citizens striving for their maximum potential through relevant, innovative, and rigorous learning experiences. The venue would deliver a comprehensive fine arts facility for purpose of showcasing our amazing student performers and artists.

LEARNING SPACES SUPPORT THE CURRICULUM

Students are encouraged by teaching innovation, creative thinking and testing multiple perspectives with a technological and flexible environment. The philosophy that students are never too young or too old to discover or be discovered, reiterates the notion of bridging the artist's future to success. The facility features fully functioning classroom spaces for advanced art experimentation, dance, and music courses for learners to thrive. Learning and performance spaces designed for optimal and superior functionality offer unrivaled experience. Artists are encouraged to embrace new technologies and utilize them in extraordinary ways.

“The arts studio and dynamic space becomes the tool that fosters, cultivates, and positively influences the lives of the students through art advocacy.”



Arlington ISD Center for Visual and Performing Arts

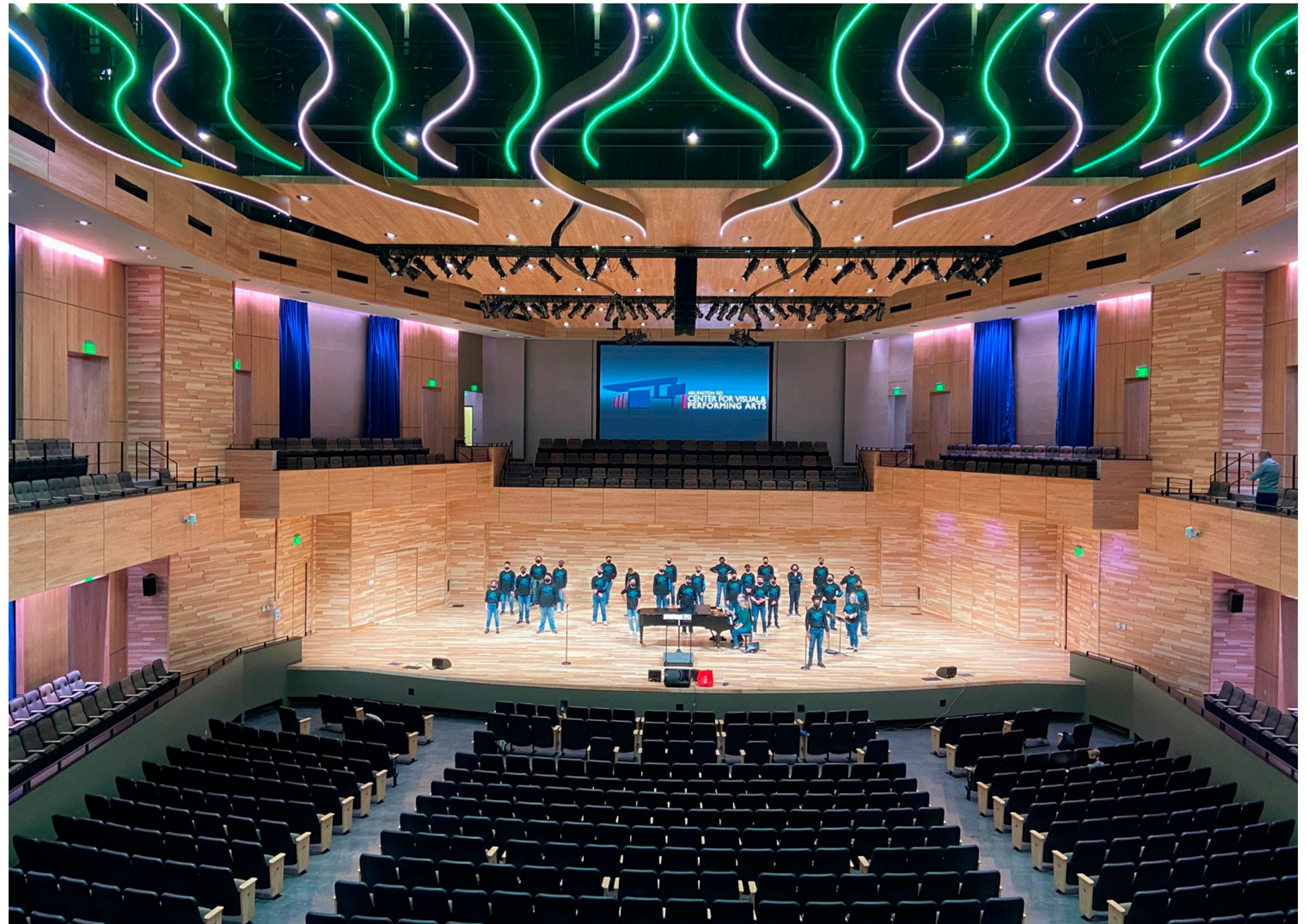
Learning Environment

ENVIRONMENT THAT SUPPORTS A VARIETY OF LEARNING + TEACHING STYLES

1,250-seat concert hall was designed to deliver acoustical quality second only to the top professional venues in the region like the Meyerson Symphony Center or Bass Hall, where the building is an instrument unto itself and can be tuned according to the needs of each performance. Through a special partnership with Steinway, the CVPA will be one of the only facilities nationally to feature a Spirio piano, capable of live performance capture and playback. This powerful tool of expression, provides new ways to access, share and experience performances for the students on a global scale.

A 425-seat theater provides students the intimate setting to explore their theatrical prowess and learn to command an audience in performance. The theater features a first-class stage for both district and professional productions.

These two state-of-the-art education spaces are rounded out by supporting learning spaces such as a dedicated dance studio, an instrument repair studio to house the district's groundbreaking program, a dedicated art gallery and a visual arts studio and courtyard modeled after the Studio Arts Center at the University of Texas at Arlington. The extraordinary mix of learning serves the entire district, and provides a holistic access to the arts education.



Arlington ISD Center for Visual and Performing Arts

Learning Environment

ADAPTABLE AND FLEXIBLE ENVIRONMENTS

An integrated design team of engineers, interior designers and acousticians worked collectively to outfit the geometry of the space to optimize acoustics, lighting and a custom ribbon-like lit baffle design adding visual appeal and flexibility to the space while amplifying its acoustic performance. The Concert Hall becomes a tunable and technically adaptable environment for a variety of settings and performances.

The studio theater is a smaller performance space -- designed in the same warm tones, textures and branded experience as the rest of the fine arts building – where student actors can glance at the balconies and make eye contact with the audience, making the experience more intimate, professional and personal. The space is equipped with a digital backdrop that broadens the range of scenery options for student and professional performances and the hall meets UIL One-Act Play (OAP) specifications.

“The concert hall in the Arlington ISD Center for Visual and Performing Arts features a towering ceiling whose volume enhances how sound travels in the venue.”







04



PHYSICAL ENVIRONMENT

*ARLINGTON ISD CENTER FOR VISUAL AND
PERFORMING ARTS*

Arlington ISD Center for Visual and Performing Arts

Physical Environment

PHYSICAL ATTRIBUTES OF THE ENVIRONMENT

The team’s thoughtful design establishes a tree-lined plaza between the fine arts and athletics centers. Across the new street, the campus plan features two parking lots, one for each building but sized for shared parking, effectively reducing the overall paved area. Between them, on the lushest part of the site, the design preserves a park-like space for the “Arts Lawn” where Arlington residents and visitors can stroll and admire student sculptures. The lawn also has room for a future amphitheater.

HOW THE CVPA FITS WITHIN THE LARGER CONTEXT OF THE COMMUNITY

Integrating the community into the Center was another important goal in the design of the building. Its role as a year-round venue allows third party events to occur, providing ample opportunities for the students to not only see professional performances, but to take part in them. The Center has capacity for banquets, meetings, trainings and ticketed events, but their students will always come first.



- Center of Visual and Performing Arts
- Athletic Center
- Outdoor Performance Plaza
- Sell-off Parcel
- Pedestrian Main Street
- Arts Lawn & Sculpture Garden
(Future Amphitheatre)

Arlington ISD Center for Visual and Performing Arts

Physical Environment

ENVIRONMENT THAT INSPIRES AND MOTIVATES

The Architecture takes cues from the creative process so clearly visible in the arts profession. Rhythms, patterns, movement, energy, are all expressed in both the performing and visual arts. The elegance of the space gives the impression you're in a professional environment. For students, their standards are raised. They *want* to prepare better and *want* to play better, so performances improve and they're more inspired to become their future selves. It's a cycle that creates an incredible experience and a demand for first class instruction.

“The first time a student sings or plays in the hall, their reaction is always laughter and big smiles. Professional musicians say it’s on par with the best halls in the metroplex.”

-Michael Stringer, Assistant Director of Fine Arts, AISD





ART
GALLERY

05

RESULTS OF THE PROCESS

*ARLINGTON ISD CENTER FOR VISUAL AND
PERFORMING ARTS*

Arlington ISD Center for Visual and Performing Arts

Results of the Planning Process and Project

ACHIEVING THE EDUCATIONAL GOALS AND OBJECTIVES

The multi-purpose performance venue, theater, instrument repair shop, piano class, arts studio and gallery provide dedicated spaces and specialized features for students. Here they have the opportunity to learn every aspect of their craft, exploring on-stage and behind-the-scenes career paths in the arts.

ACHIEVING THE SCHOOL DISTRICT GOALS

The goal of providing Arlington Independent School District students with every possible advantage as they compete for coveted places in higher education institutions was realized through the delivery of a world-class facility. The project exemplifies the commitment to their students and an investment in their future.

ACHIEVING COMMUNITY GOALS

The design team established site development objectives rooted in the spirit of the Entertainment District Zoning Overlay and worked along side city officials to create alignment to achieve a vision that creates a community destination.

The facility, as a year-round venue, will continue to allow third party events to occur, providing ample opportunities for the students experience professional performances, and to take part *in* them.

Delivering a comprehensive venue space with the district and communities vision and goals top of mind, resulted in a state-of-the-art venue for the Arlington ISD arts programs and people to flourish. The community at large will continue to engage in performance experiences that are truly remarkable and memorable.

UNINTENDED RESULTS AND ACHIEVEMENTS OF THE PROCESS & PROJECT

Thanks to this process, the district was able to right-size the project to their programs and goals. Initially, this was funded as a single, multi-use, 2,000-seat venue. By going through this deep dive stakeholder engagement, they were able to set clear objectives with regards to quality, scale and performance of the venues.

Another fortuitous value added to the district was the emergency utilization of the facilities as a base camp to give COVID-19 vaccinations to every employee in the school district. The unknown benefits of a venue such as this are extremely hard to measure. In this case, one has to experience the facility only once to understand what an incredible icon it is.





“Even before the CVPA opened its doors, a steady stream of visitors from other school districts, from museums, and other architecture firms were requesting tours to take a look. Everybody has their eye on this building; it’s pretty spectacular.”

- Dr. Christopher Anderson, Director of Fine Arts, AISD